

1908002-ORC

Sublime Solutions
 500 S. Danebo Street
 Eugene, OR 97402
 541-484-5770

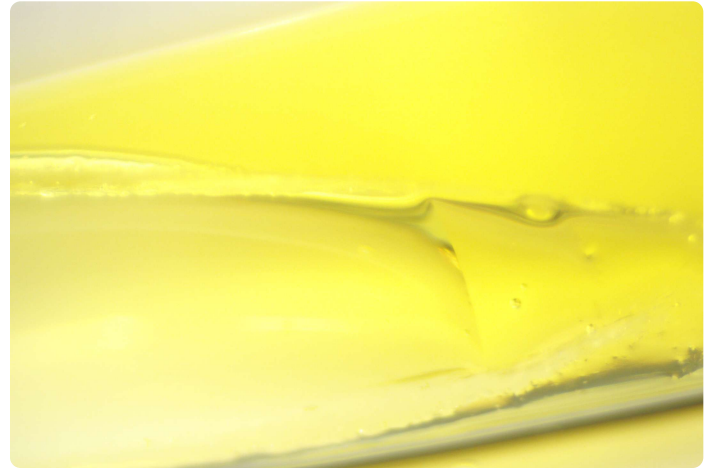
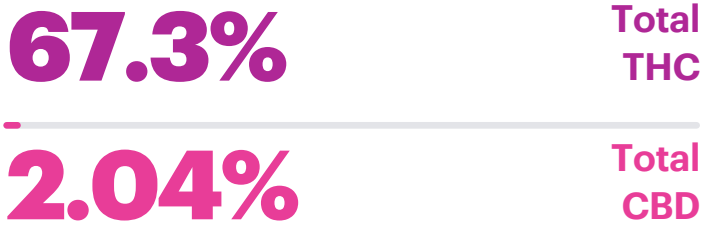
Sample Type: Combined Category
 Sample Date: 8/12/2019
 Analysis Date: 8/13/2019
 Report Date: 8/14/2019

Metric Batch ID:
 1A401030000697B000005551
 Metric Sample ID:
 1A401030000697B000005558

Harvest/Process Date:
 Report ID:
LS-190814-5

Potency

Potency Analysis Date: 8/13/2019
 Potency Batch ID: CAN_081319A
 Potency Method: JAOAC 2015.1



Samples: XPB-ZCM-JJD, SNT-SBF-MXC

Analyte	Description	LOQ	RPD	Min.	Max.	Avg.	Unit: %
Δ9THC	Delta-9 Tetrahydrocannabinol	1.0	3.26	66.2	68.4	67.3	
THCA	Tetrahydrocannabinolic acid	1.0	0.00	ND	ND	ND	
CBD	Cannabidiol	1.0	2.15	2.02	2.07	2.04	
CBDA	Cannabidiolic acid	1.0	0.00	ND	ND	ND	
Δ8THC	Delta-8 Tetrahydrocannabinol*	1.0	0.00	ND	ND	ND	
THCV	Tetrahydrocannabivarin*	1.0	0.00	<LOQ	<LOQ	<LOQ	
CBG	Cannabigerol*	1.0	5.45	1.77	1.87	1.82	
CBGA	Cannabigerolic acid*	1.0	0.00	ND	ND	ND	
CBC	Cannabichromene*	1.0	0.00	<LOQ	<LOQ	<LOQ	
CBCA	Cannabichromenic acid*	1.0	0.00	ND	ND	ND	
CBN	Cannabinol	1.0	0.00	<LOQ	<LOQ	<LOQ	
Total THC	Δ9THC + (THCA × 0.877)		3.26	66.2	68.4	67.3	
Total CBD	CBD + (CBDA × 0.877)		2.15	2.02	2.07	2.04	
Total			3.00	70.0	72.3	71.2	

Compliance

Potency Within limits Analysis Date: 8/13/2019 Pass 


 Ian Eustis
 Lab Director


 Aaron Troyer
 Chief Science Officer



1908002-ORC

Sublime Solutions
500 S. Danebo Street
Eugene, OR 97402
541-484-5770Sample Type: Combined Category
Sample Date: 8/12/2019
Analysis Date: 8/13/2019
Report Date: 8/14/2019Metric Batch ID:
1A401030000697B000005551
Metric Sample ID:
1A401030000697B000005558Harvest/Process Date:
Report ID:
LS-190814-5

Potency Quality Control Data

Potency Analysis Date: 8/13/2019
Potency Batch ID: CAN_081319AMethod: JAOAC 2015.1
Unit: mg/g

LCS Recovery			
Compound	Recovery	Acceptance	Pass/Fail
CBDA	101%	80-120%	Pass
CBD	101%	80-120%	Pass
THC	100%	80-120%	Pass
THCA	98%	80-120%	Pass

Matrix Recovery			
Compound	Recovery	Acceptance	Pass/Fail
CBDA	103%	70-130%	Pass
CBD	103%	70-130%	Pass
THC	81%	70-130%	Pass
THCA	100%	70-130%	Pass

1908002-ORC

Sublime Solutions
500 S. Danebo Street
Eugene, OR 97402
541-484-5770Sample Type: Combined Category
Sample Date: 8/12/2019
Analysis Date: 8/13/2019
Report Date: 8/14/2019Metric Batch ID:
1A401030000697B000005551
Metric Sample ID:
1A401030000697B000005558Harvest/Process Date:
Report ID:
LS-190814-5

Qualifier Flag Descriptions

J	Reported result is an estimate - the value is less than the minimum calibration level but greater than the estimated detection limit (EDL)
U	The analyte was not detected in the sample at the estimated detection limit (EDL)
E	Exceeds calibration range
D	Dilution data - result was obtained from the analysis of a dilution
B	Analyte found in sample and associated blank
C	Co-eluting compound
R	Relative Percent Difference (RPD) outside control limits
NR	Analyte not reported because of problems in sample preparation or analysis
ND	Non-Detect
X	Results from reinjection/repeat/re-column data
EMC	Estimated maximum possible concentration - indicates that a peak is detected but did not meet the method required criteria
M	Manual integration
PS	Peaks split
HB	Control acceptance criteria are exceeded high and the associated sample is below the detection limit
LB	Control acceptance criteria are exceeded low and the associated sample exceeds the regulatory limit
ME	Marginal Exceedance
LR	Low Recovery Analyte
LOQ	Limit of Quantitation