

1806004-ORC

Sublime Solutions
 500 S. Danebo Street
 Eugene, OR 97402
 541-484-5770

Sample Type: Extracts
 Sample Date: 6/11/2018
 Analysis Date: 6/12/2018
 Report Date: 6/13/2018

Metric Batch ID:
 1A401030000697B000003226
 Client's Batch ID:
 Harvest/Process Date:

Report ID:
WPDG-BNRZ

Potency

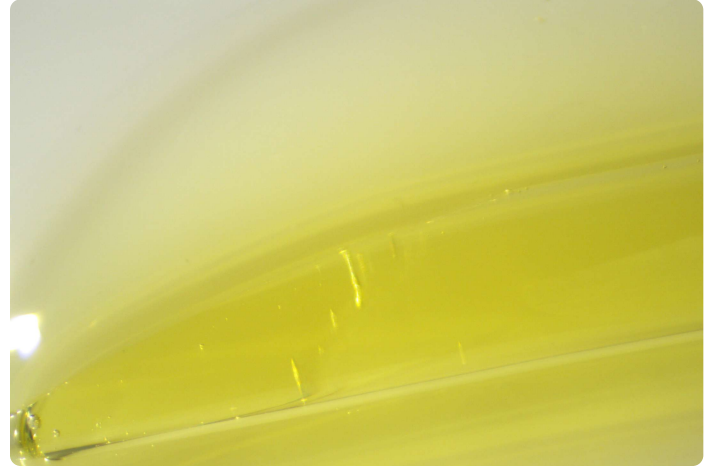
Method: EPA JAOAC 2015.1
 Potency Analysis Date: 6/12/2018
 Potency Batch ID: CAN_061218B

68.2%

Total
THC

ND




Total
CBD



Samples: ZWW-BCF-XPZ, BZM-BZM-HPC

Analyte	Description	LOQ	RPD	Min.	Max.	Avg.	Unit: %
Δ9THC	Delta-9 Tetrahydrocannabinol	1.00	1.60	67.7	68.7	68.2	
THCA	Tetrahydrocannabinolic acid	1.00	0.00	ND	ND	ND	
CBD	Cannabidiol	1.00	0.00	ND	ND	ND	
CBDA	Cannabidiolic acid	1.00	0.00	ND	ND	ND	
Δ8THC	Delta-8 Tetrahydrocannabinol*	1.00	0.00	ND	ND	ND	
THCV	Tetrahydrocannabivarin*	1.00	0.00	ND	ND	ND	
CBG	Cannabigerol*	1.00	1.83	3.11	3.16	3.14	
CBGA	Cannabigerolic acid*	1.00	0.00	ND	ND	ND	
CBC	Cannabichromene*	1.00	8.58	1.67	1.82	1.74	
CBCA	Cannabichromenic acid*	1.00	0.00	ND	ND	ND	
CBN	Cannabinol	1.00	0.00	<LOQ	<LOQ	<LOQ	
Total THC	Δ9THC + (THCA × 0.877)		1.60	67.7	68.7	68.2	
Total CBD	CBD + (CBDA × 0.877)		0.00	ND	ND	ND	
Total			1.37	72.4	73.7	73.1	

Safety

Pesticides	Within limits	Analysis Date: 6/12/2018	Pass 
Solvents	Within limits	Analysis Date: 6/12/2018	Pass 
Potency	Within limits	Analysis Date: 6/12/2018	Pass 


 Ian Eustis
 Lab Director


 Aaron Troyer
 Chief Science Officer



1806004-ORC

Sublime Solutions
 500 S. Danebo Street
 Eugene, OR 97402
 541-484-5770

Sample Type: Extracts
 Sample Date: 6/11/2018
 Analysis Date: 6/12/2018
 Report Date: 6/13/2018

Metric Batch ID:
 1A401030000697B000003226
 Client's Batch ID:
 Harvest/Process Date:

Report ID:
WPDG-BNRZ



Pesticides Sample Analysis

Pesticides Analysis Date: 6/12/2018
 Pesticides Batch ID: PST_061218A

Method: EN 15662
 Unit: µg/g (ppm)

Pass 

Analyte	ZWW-BCF-XPZ	BZM-BZM-HPC	Limits	LOQ	Status	Notes	Analyte	ZWW-BCF-XPZ	BZM-BZM-HPC	Limits	LOQ	Status	Notes
Abamectin	<LQ	<LQ	0.5	0.1	Pass		Metalaxyl	<LQ	<LQ	0.2	0.1	Pass	
Acephate	<LQ	<LQ	0.4	0.1	Pass		Methiocarb	<LQ	<LQ	0.2	0.1	Pass	
Acequinocyl	<LQ	<LQ	2.0	1.0	Pass		Methomyl	<LQ	<LQ	0.4	0.1	Pass	
Acetamiprid	<LQ	<LQ	0.2	0.1	Pass		Methyl Parathion	<LQ	<LQ	0.2	0.2	Pass	
Aldicarb	<LQ	<LQ	0.4	0.1	Pass		MGK-264	<LQ	<LQ	0.2	0.2	Pass	
Azoxystrobin	<LQ	<LQ	0.2	0.1	Pass		Myclobutanil	<LQ	<LQ	0.2	0.1	Pass	
Bifenazate	<LQ	<LQ	0.2	0.1	Pass		Naled	<LQ	<LQ	0.5	0.2	Pass	
Bifenthrin	<LQ	<LQ	0.2	0.1	Pass		Oxamyl	<LQ	<LQ	1.0	0.1	Pass	
Boscalid	<LQ	<LQ	0.4	0.1	Pass		Paclobutrazol	<LQ	<LQ	0.4	0.1	Pass	
Carbaryl	<LQ	<LQ	0.2	0.1	Pass		Permethrins	<LQ	<LQ	0.2	0.1	Pass	
Carbofuran	<LQ	<LQ	0.2	0.1	Pass		Phosmet	<LQ	<LQ	0.2	0.1	Pass	
Chlorantraniliprole	<LQ	<LQ	0.2	0.1	Pass		Piperonyl Butoxide	<LQ	<LQ	2.0	0.1	Pass	
Chlorfenapyr	<LQ	<LQ	1.0	0.1	Pass		Prallethrin	<LQ	<LQ	0.2	0.1	Pass	
Chlorpyrifos	<LQ	<LQ	0.2	0.1	Pass		Propiconazole	<LQ	<LQ	0.4	0.1	Pass	
Clofentezine	<LQ	<LQ	0.2	0.1	Pass		Propoxur	<LQ	<LQ	0.2	0.1	Pass	
Cyfluthrin	<LQ	<LQ	1.0	0.5	Pass		Pyrethrins	<LQ	<LQ	1.0	0.5	Pass	
Cypermethrin	<LQ	<LQ	1.0	0.1	Pass		Pyridaben	<LQ	<LQ	0.2	0.1	Pass	
Daminozide	<LQ	<LQ	1.0	0.5	Pass		Spinosad	<LQ	<LQ	0.2	0.1	Pass	
Diazinon	<LQ	<LQ	0.2	0.1	Pass		Spiromesifen	<LQ	<LQ	0.2	0.1	Pass	
Dichlorvos (DDVP)	<LQ	<LQ	1.0	0.5	Pass		Spirotetramat	<LQ	<LQ	0.2	0.1	Pass	
Dimethoate	<LQ	<LQ	0.2	0.1	Pass		Spiroxamine	<LQ	<LQ	0.4	0.1	Pass	
Ethoprophos	<LQ	<LQ	0.2	0.1	Pass		Tebuconazole	<LQ	<LQ	0.4	0.1	Pass	
Etofenprox	<LQ	<LQ	0.4	0.1	Pass		Thiacloprid	<LQ	<LQ	0.2	0.1	Pass	
Etoxazole	<LQ	<LQ	0.2	0.1	Pass		Thiamethoxam	<LQ	<LQ	0.2	0.1	Pass	
Fenoxycarb	<LQ	<LQ	0.2	0.1	Pass		Trifloxystrobin	<LQ	<LQ	0.2	0.1	Pass	
Fenpyroximate	<LQ	<LQ	0.4	0.1	Pass								
Fipronil	<LQ	<LQ	0.4	0.1	Pass								
Flonicamid	<LQ	<LQ	1.0	0.1	Pass								
Fludioxonil	<LQ	<LQ	0.4	0.1	Pass								
Hexythiazox	<LQ	<LQ	1.0	0.1	Pass								
Imazalil	<LQ	<LQ	0.2	0.1	Pass								
Imidacloprid	<LQ	<LQ	0.4	0.1	Pass								
Kresoxim-methyl	<LQ	<LQ	0.4	0.1	Pass								
Malathion	<LQ	<LQ	0.2	0.1	Pass								

1806004-ORC

Sublime Solutions
 500 S. Danebo Street
 Eugene, OR 97402
 541-484-5770

Sample Type: Extracts
 Sample Date: 6/11/2018
 Analysis Date: 6/12/2018
 Report Date: 6/13/2018

Metric Batch ID:
 1A401030000697B000003226
 Client's Batch ID:
 Harvest/Process Date:

Report ID:
WPDG-BNRZ

Quality Control Data Pesticides

Pesticides QC Analysis Date: 6/12/2018
 Pesticides QC Batch ID: PST_061218A

Method: EN 15662
 Unit: µg/g (ppm)

Laboratory Pesticides Quality Control Results

Method: EN 15662				Units: ppm (µg/g)				Analysis date: 6/12/18				Batch ID: PST_061218A					
Pesticide	Blank			LCS	LCS	LCS%	Limits	Notes	Pesticide	Blank			LCS	LCS	LCS%	Limits	Notes
	Result	LOQ	Notes	Result	Spike	Rec				Result	Spike	Rec					
Abamectin	nd	0.1		1.0	1.0	98	50 - 150		Imazalil	nd	0.1		0.9	1.0	88	50 - 150	
Acephate	nd	0.1		1.0	1.0	98	50 - 150		Imidacloprid	nd	0.1		0.9	1.0	92	50 - 150	
Acequinocyl	nd	1.0		0.6	1.0	56	50 - 150		Kresoxim-methyl	nd	0.1		1.2	1.0	120	50 - 150	
Acetamiprid	nd	0.1		1.0	1.0	98	50 - 150		Malathion	nd	0.1		1.0	1.0	100	50 - 150	
Aldicarb	nd	0.1		1.1	1.0	106	50 - 150		Metalaxyl	nd	0.1		1.2	1.0	115	50 - 150	
Azoxystrobin	nd	0.1		1.1	1.0	109	50 - 150		Methiocarb	nd	0.1		1.1	1.0	108	50 - 150	
Bifenthrin	nd	0.1		1.0	1.0	99	50 - 150		Methomyl	nd	0.1		1.0	1.0	103	50 - 150	
Bifenazate	nd	0.1		0.9	1.0	90	50 - 150		Methyl Parathion	nd	0.1		10.1	10.0	101	30 - 150	
Boscalid	nd	0.1		0.9	1.0	95	50 - 150		MGK-264	nd	0.2		1.1	1.0	110	50 - 150	
Carbaryl	nd	0.1		1.1	1.0	105	50 - 150		Myclobutanil	nd	0.1		1.0	1.0	98	50 - 150	
Carbofuran	nd	0.1		1.0	1.0	98	50 - 150		Naled	nd	0.1		1.0	1.0	102	50 - 150	
Chlorantraniliprole	nd	0.1		0.7	1.0	75	50 - 150		Oxamyl	nd	0.1		1.0	1.0	103	50 - 150	
Chlorfenapyr	nd	0.1		1.0	1.0	96	50 - 150		Paclobutrazol	nd	0.1		1.0	1.0	96	50 - 150	
Chlorpyrifos	nd	0.1		1.1	1.0	110	50 - 150		Permethrin	nd	0.1		1.0	1.0	101	50 - 150	
Clofentezine	nd	0.1		0.9	1.0	89	50 - 150		Phosmet	nd	0.1		0.8	1.0	84	50 - 150	
Cyfluthrin	nd	0.5		1.2	1.0	124	50 - 150		Piperonyl Butoxide	nd	0.1		1.0	1.0	105	50 - 150	
Cypermethrin	nd	0.1		1.1	1.0	112	50 - 150		Prallethrin	nd	0.1		1.0	1.0	99	50 - 150	
Daminozide	nd	0.5		nd	1.0		10 - 150	LR	Propiconazole	nd	0.1		1.0	1.0	101	50 - 150	
Diazinon	nd	0.1		1.2	1.0	116	50 - 150		Propoxur	nd	0.1		1.1	1.0	109	50 - 150	
Dichlorvos	nd	0.5		0.9	1.0	89	50 - 150		Pyrethrins	nd	0.2		1.1	1.0	110	50 - 150	
Dimethoate	nd	0.1		1.0	1.0	98	50 - 150		Pyridaben	nd	0.1		1.1	1.0	111	50 - 150	
Ethoprophos	nd	0.1		1.0	1.0	96	50 - 150		Spinosad A kps	nd	0.1		0.8	1.0	78	50 - 150	
Etofenprox	nd	0.1		1.1	1.0	106	50 - 150		Spinosad D kps	nd	0.1		0.7	1.0	74	50 - 150	
Etoxazole	nd	0.1		1.1	1.0	107	50 - 150		Spiromesifen	nd	0.1		1.2	1.0	116	50 - 150	
Fenoxycarb	nd	0.1		1.1	1.0	110	50 - 150		Spirotetramat	nd	0.1		1.2	1.0	121	50 - 150	
Fenpyroximate	nd	0.1		1.0	1.0	105	50 - 150		Spiroxamine	nd	0.1		0.7	1.0	74	50 - 150	
Fipronil	nd	0.1		1.1	1.0	115	50 - 150		Tebuconazole	nd	0.1		0.8	1.0	80	50 - 150	
Flonicamid	nd	0.1		1.0	1.0	101	50 - 150		Thiacloprid	nd	0.1		0.9	1.0	89	50 - 150	
Fludioxonil	nd	0.1		1.0	1.0	97	50 - 150		Thiamethoxam	nd	0.1		0.8	1.0	84	50 - 150	
Hexythiazox	nd	0.1		0.9	1.0	85	50 - 150		Trifloxystrobin	nd	0.1		1.1	1.0	111	50 - 150	

1806004-ORC

Sublime Solutions
 500 S. Danebo Street
 Eugene, OR 97402
 541-484-5770

Sample Type: Extracts
 Sample Date: 6/11/2018
 Analysis Date: 6/12/2018
 Report Date: 6/13/2018

Metric Batch ID:
 1A401030000697B000003226
 Client's Batch ID:
 Harvest/Process Date:

Report ID:
WPDG-BNRZ



Residual Solvents Sample Analysis

Solvents Analysis Date: 6/12/2018
 Solvents Batch ID: RES_061218A

Method: EPA 5021A
 Unit: µg/g (ppm)

Pass 

Analyte	ZWW-BCF-XPZ	BZM-BZM-HPC	RPD (%)	Limits	LOQ	Status	Notes
1,4-Dioxane	<LOQ	<LOQ	0.00	380.0	50.0	Pass	
2-Butanol	<LOQ	<LOQ	0.00	5000.0	50.0	Pass	
2-Ethoxyethanol	<LOQ	<LOQ	0.00	160.0	50.0	Pass	
Acetone	<LOQ	<LOQ	0.00	5000.0	50.0	Pass	
Acetonitrile	<LOQ	<LOQ	0.00	410.0	50.0	Pass	
Benzene	<LOQ	<LOQ	0.00	2.0	2.0	Pass	
Butanes	<LOQ	<LOQ	0.00	5000.0	50.0	Pass	
Cumene	<LOQ	<LOQ	0.00	70.0	50.0	Pass	
Cyclohexane	<LOQ	<LOQ	0.00	3880.0	50.0	Pass	
Ethyl Acetate	<LOQ	<LOQ	0.00	5000.0	50.0	Pass	
Ethyl Ether	<LOQ	<LOQ	0.00	5000.0	50.0	Pass	
Ethylene Glycol	<LOQ	<LOQ	0.00	620.0	250.0	Pass	
Ethylene Oxide	<LOQ	<LOQ	0.00	50.0	50.0	Pass	
Heptane	<LOQ	<LOQ	0.00	5000.0	50.0	Pass	
Hexanes	<LOQ	<LOQ	0.00	290.0	50.0	Pass	
Isopropanol (2-Propanol)	<LOQ	<LOQ	0.00	5000.0	50.0	Pass	
Isopropyl Acetate	<LOQ	<LOQ	0.00	5000.0	50.0	Pass	
Methanol	<LOQ	<LOQ	0.00	3000.0	50.0	Pass	
Dichloromethane	<LOQ	<LOQ	0.00	600.0	50.0	Pass	
Pentanes	<LOQ	<LOQ	0.00	5000.0	50.0	Pass	
Propane	<LOQ	<LOQ	0.00	5000.0	50.0	Pass	
Tetrahydrofuran	<LOQ	<LOQ	0.00	720.0	50.0	Pass	
Toluene	<LOQ	<LOQ	0.00	890.0	50.0	Pass	
Xylenes	<LOQ	<LOQ	0.00	2170.0	50.0	Pass	

1806004-ORC

Sublime Solutions
 500 S. Danebo Street
 Eugene, OR 97402
 541-484-5770

Sample Type: Extracts
 Sample Date: 6/11/2018
 Analysis Date: 6/12/2018
 Report Date: 6/13/2018

Metric Batch ID:
 1A401030000697B000003226
 Client's Batch ID:
 Harvest/Process Date:

Report ID:
WPDG-BNRZ

Quality Control Data Residual Solvents

Solvents QC Analysis Date: 6/12/2018
 Solvents QC Batch ID: RES_061218A

Method: EPA 5021A
 Unit: µg/g (ppm)

Laboratory Residual Solvent Quality Control Results

Method: EPA 5021A

Units: µg/mL

Batch ID: RES_061218A

Matrix Blank / LCS Results

Analyte	Blank Result	Blank Limit	Notes	LCS Result	LCS Spike	LCS% Rec	Limits	Notes
1,4-Dioxane	#VALUE!	50		947	1000	95	70 - 130	
2-Butanol	#VALUE!	50		900	1000	90	70 - 130	
2-Ethoxyethanol	#VALUE!	50		1103	1000	110	70 - 130	
Acetone	#VALUE!	50		835	1000	83	70 - 130	
Acetonitrile	#VALUE!	50		846	1000	85	70 - 130	
Benzene	#VALUE!	2		18	20	89	70 - 130	
Butanes								
<i>Butane</i>	#VALUE!	50		813	1000	81	70 - 130	
<i>Isobutane</i>	#VALUE!	50		812	1000	81	70 - 130	
Cyclohexane	#VALUE!	50		902	1000	90	70 - 130	
Ethyl acetate	#VALUE!	50		860	1000	86	70 - 130	
Ethyl ether	#VALUE!	50		901	1000	90	70 - 130	
Ethylbenzene	#VALUE!	50		998	1000	100	70 - 130	
Ethylene glycol	#VALUE!	250		1278	1000	128	70 - 130	
Ethylene oxide	#VALUE!	50		775	1000	78	70 - 130	
Heptane	#VALUE!	50		820	1000	82	70 - 130	
Hexanes								
<i>n-Hexane</i>	#VALUE!	50		855	1000	86	70 - 130	
<i>2-Methylpentane</i>	#VALUE!	50		804	1000	80	70 - 130	
<i>3-Methylpentane</i>	#VALUE!	50		881	1000	88	70 - 130	
<i>2,2-Dimethylbutane</i>	#VALUE!	50		896	1000	90	70 - 130	
<i>2,3-Dimethylbutane</i>	#VALUE!	50		839	1000	84	70 - 130	
Isopropanol	< LOQ	50		903	1000	90	70 - 130	
Isopropyl acetate	#VALUE!	50		865	1000	86	70 - 130	
Cumene	#VALUE!	50		1055	1000	106	70 - 130	
Methanol	#VALUE!	50		912	1000	91	70 - 130	
Dichloromethane	#VALUE!	50		852	1000	85	70 - 130	
Pentanes								
<i>Pentane</i>	#VALUE!	50		789	1000	79	70 - 130	
<i>Isopentane</i>	#VALUE!	50		807	1000	81	70 - 130	
<i>Neopentane</i>	#VALUE!	50		894	1000	89	70 - 130	
Propane	#VALUE!	50		829	1000	83	70 - 130	
Tetrahydrofuran	#VALUE!	50		857	1000	86	70 - 130	
Toluene	#VALUE!	50		990	1000	99	70 - 130	
Xylenes								
<i>m-Xylene</i>	#VALUE!	50		1084	1000	108	70 - 130	
<i>o/p-Xylene</i>	#VALUE!	50		1032	1000	103	70 - 130	

1806004-ORC

Sublime Solutions
500 S. Danebo Street
Eugene, OR 97402
541-484-5770Sample Type: Extracts
Sample Date: 6/11/2018
Analysis Date: 6/12/2018
Report Date: 6/13/2018Metric Batch ID:
1A401030000697B000003226
Client's Batch ID:
Harvest/Process Date:Report ID:
WPDG-BNRZ

Qualifier Flag Descriptions

J	Reported result is an estimate - the value is less than the minimum calibration level but greater than the estimated detection limit (EDL)
U	The analyte was not detected in the sample at the estimated detection limit (EDL)
E	Exceeds calibration range
D	Dilution data - result was obtained from the analysis of a dilution
B	Analyte found in sample and associated blank
C	Co-eluting compound
R	Relative Percent Difference (RPD) outside control limits
NR	Analyte not reported because of problems in sample preparation or analysis
ND	Non-Detect
X	Results from reinjection/repeat/re-column data
EMC	Estimated maximum possible concentration - indicates that a peak is detected but did not meet the method required criteria
M	Manual integration
PS	Peaks split
HB	Control acceptance criteria are exceeded high and the associated sample is below the detection limit
LB	Control acceptance criteria are exceeded low and the associated sample exceeds the regulatory limit
ME	Marginal Exceedance
LR	Low Recovery Analyte
LOQ	Limit of Quantitation